

Alfred

Baba Yetu

from the video game *Civilization IV*

Voicings available:
42801 – TTBB

Music by **Christopher Tin**

Also available:

 *Sound-Trax* #27828

Swahili adaptation of "The Lord's Prayer" by
Chris Kiagiri

Adapted by **Derek Machan**

from *Civilization IV*
BABA YETU
for T.T.B.B. voices and piano
with optional SoundTrax CD*

Adapted by
DEREK MACHAN

Music by
CHRISTOPHER TIN (BMI)
Swahili adaptation of "The Lord's Prayer" by
CHRIS KIAGIRI

Freely Rhythmically (♩ = ca. 92)

mf warmly *pp*

TENOR SOLO

Oo. _____

TENOR I
TENOR II

p

Mm. _____

BARITONE
BASS

p

Freely Rhythmically (♩ = ca. 92)

mf

PIANO

* SoundTrax CD available (27828).
Pronunciation guide on page 16.

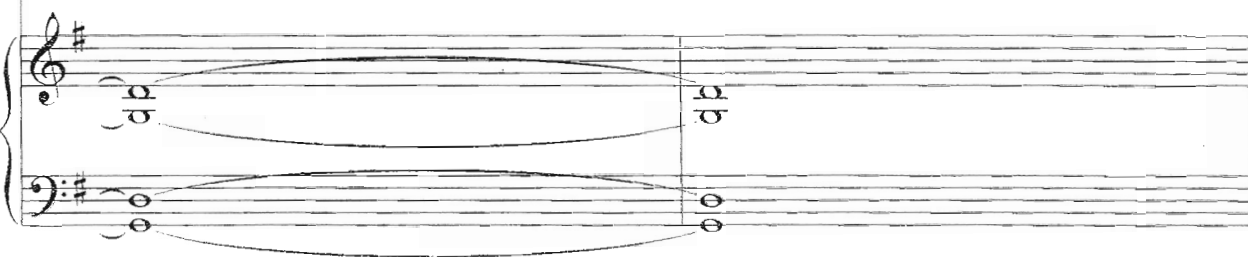
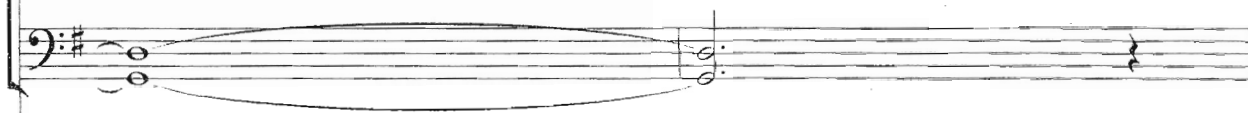
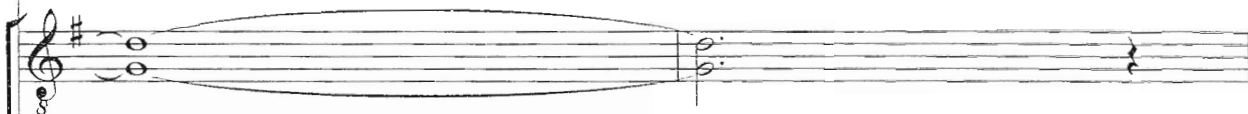
© 2005, 2007 TIN WORKS PUBLISHING (BMI)
All Rights Administered by WARNER-TAMERLANE PUBLISHING CORP.
This Arrangement © 2014 TIN WORKS PUBLISHING (BMI)
All Rights Reserved. Printed in USA.

Sole Selling Agent for This Arrangement: Alfred Music
To purchase a full-length performance recording of this piece, go to alfred.com/downloads

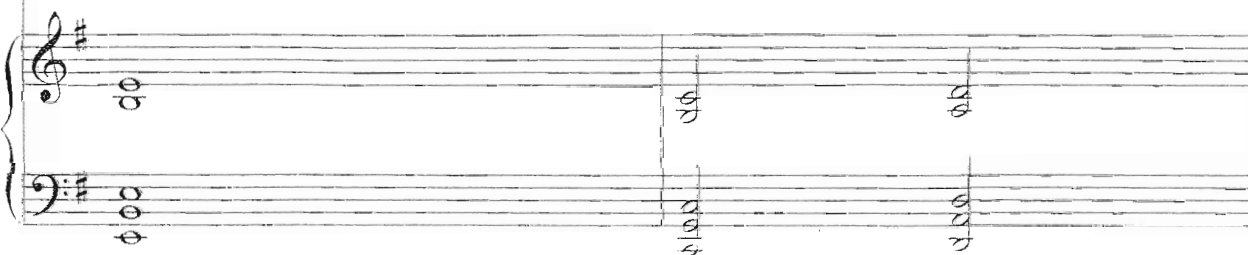
5

ff powerfully

Ba - ba ye - tu ye - tu'u - li - ye mbi - ngu - ni ye - tu ye - tu a - mi - na.



Ba - ba ye - tu ye - tu'u - li - ye m - ji - na la - ko e - li - tu - ku - zwe. —

*Mm.*

8

f *mel.*

Ba - ba ye - tu ye - tu'u - li - ye mbi - ngu - ni ye - tu ye - tu a - mi - na.

f

11

8

Ba - ba ye - tu ye - tu'u - li - ye m - ji - na la - ko e - li - tu - ku - zwe.

f

13

*mf**full*

U - tu - pe le - o cha - ku - la che - tu

tu - na - cho - hi - ta - ji. U - tu - sa - me - he

*mp**cresc.*

Oo.

*mp**cresc.**mp**cresc.*

15

ff

ma - ko - sa ye - tu, hey!_

Ka - ma na - si tu - na - vyo - wa - sa - me - he - wa - li -

f

Oo,

Ah!

f

Oo,

Ah!

17

mf *fall* *fall*

o - tu - ko - se - a. U - si - tu - ti - e ka - ti - ka ma - ja - ri - bu, la - ki - ni

mp

Oo.

mp

mp

19

ff (end solo)

u - tu o - ko - e na yu - le mu - o - vu e - mi - le - le! —

cresc.

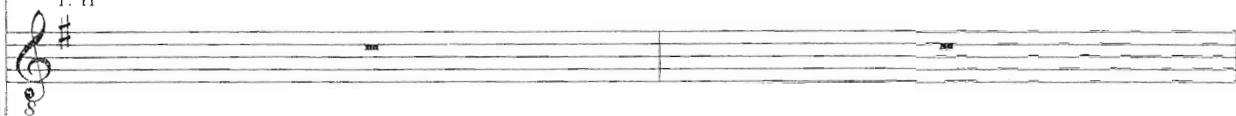
Na - mi - le - le.

cresc.

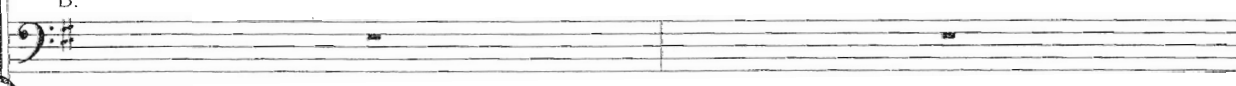
cresc.

T. I *ff*

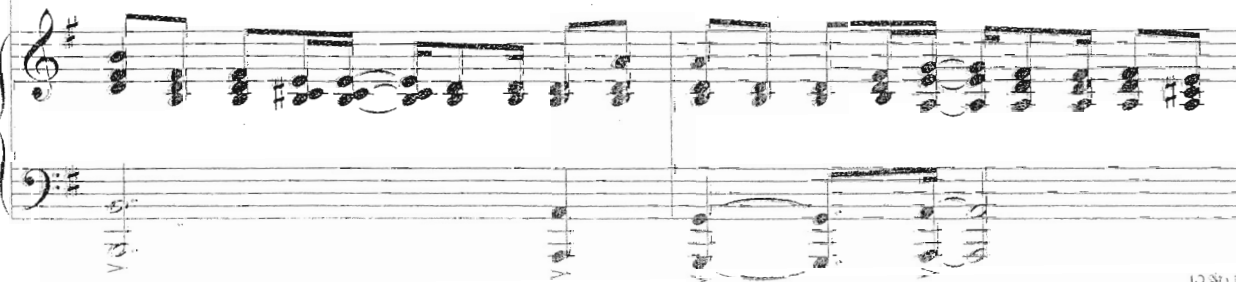
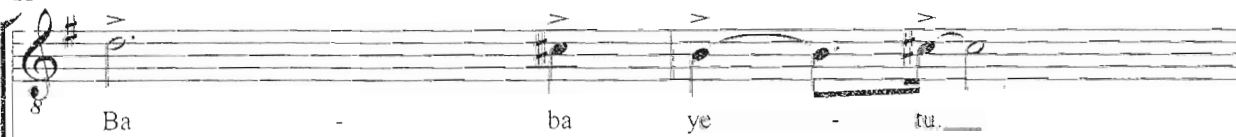
T. II

BAR. *ff*

B.



23



Ba - ba ye - tu ye - tu'u - li - ye mbi - ngu - ni ye - tu ye - tu a - mi - na.

pp *ff*

Oo. A - mi - na.

Ba - ba ye - tu ye - tu'u - li - ye mbi - ngu - ni ye - tu ye - tu a - mi - na.

Mbi - ngu - ni ye - tu.

Ba - ba ye - tu ye - tu'u - li - ye m - ji - na la - ko e - li - tu - ku - zwe.

Mbi - ngu - ni ye - tu.

Mbi - ngu - ni ye - tu.

bra 9000

T. I *sub. mp**cresc. poco a poco*T. II *Oo.*BAR. *sub. mp**cresc. poco a poco*

B.

*sub. mp**cresc. poco a poco*

32

Ah.

35

Be angry! e uphamsic I s and

37

ff

U - fal - me wa - ko u - fi - ke u - ta -

This system contains measures 37, 38, and 39. It features a vocal line with lyrics and a piano accompaniment. The key signature has one sharp (F#). The piano part consists of chords in the right hand and single notes in the left hand. Measure 39 includes a downward arrow above the vocal line.

40

ka - lo li - fa - nyi - ke du - ni - a - ni

This system contains measures 40, 41, and 42. It continues the vocal and piano parts. Measure 40 has two downward arrows above the vocal line. The piano accompaniment remains consistent with the previous system.

43

b-i-n goo

ka - ma mbi - ngu - ni. A - mi - na. Oo.

This system contains measures 43, 44, and 45. Measure 43 includes the handwritten text 'b-i-n goo' above the vocal line. The piano part features triplets in measures 43 and 44. Dynamic markings *mf* and *pp* are present in measures 44 and 45, with slurs indicating a transition between them. The piano part in measure 45 changes to a more active melodic line.

46

(opt. through m. 52)

46

(opt. through m. 52)

Oo

3

49

49

oo oh ah

cresc.

53

fff

53

fff

mel.

Ba - ba ye - tu ye - tu'u - li - ye mbi - ngu - ni ye - tu ye - tu a - mi - na.

fff

fff

Ba - ba ye - tu ye - tu'u - li - ye m - ji - na la - ko e - li - tu - ku - zwe.

57

Ba - ba ye - tu ye - tu'u - li - ye mbi - ngu - ni ye - tu ye - tu a - mi - na.

59

Ba - ba ye - tu ye - tu'u - li - ye m - ji - na la - ko e - li - tu - ku - zwe.

61 TENOR SOLO

mf *fall*

U - tu - pe le - o cha - ku - la che - tu tu - na - cho - hi - ta - ji. U - tu - sa - me - he

mp *cresc.*

Oo.

mp *cresc.*

mp *cresc.*

63 *ff*

ma - ko - sa ye - tu, hey! — Ka - ma na - si tu - na - vyo - wa - sa - me - he - wa - li -

f

Oo, Ah!

f

Oo, Ah!

f

65

mf *fall* *fal!*

o - tu - ko - se - a. U - si - tu - ti - e ka - ti - ka ma - ja - ri - bu, la - ki - ni

mp

Oo.

mp

mp

67

(end solo)

u - tu o - ko - e na yu - le mu - o - vu e - mi - le - le!

cresc.

Na - mi - le - le.

cresc.

cresc.

69

T. I

mf

Ye - tu a - mi - na, Ba - ba

T. II

mf

Ba-ba ye-tu ye - tu'u-li-ye ——— ji - na la-ko e - li - tu-ku-zwe...

BAR.

mf

Ye - tu a - mi - na, Ba - ba

72

ye - tu. Ye - tu a - mi - na,

Ba-ba ye-tu ye - tu'u-li-ye ———

ye - tu. Ye - tu a - mi - na,

Ba - ba ye - tu. Oo.

ji - na la - ko e - li - tu - ku - zwe. Oo.

Ba - ba ye - tu. Oo.

p

PRONUNCIATION GUIDE

Ba-ba ye-tu ye-tu'u-li-ye mbi-ngu-ni ye-tu ye-tu a-mi-na
(Bah-bah yeh-too yeh-too 'oo-lee-yeh mbee-ngoo-nee yeh-too yeh-too ah-mee-nah)

Ba-ba ye-tu ye-tu'u-li-ye m-ji-na la-ko e-li-tu-ku-zwe
(Bah-bah yeh-too yeh-too 'oo-lee-yeh eh-m-jee-nah lah-koh eh-lee-too-koo-zweh)

U-tu-pe le-o cha-ku-la che-tu tu-na-cho-hi-ta-ji
(Oo-too-peh leh-oh chah-koo-lah cheh-too too-nah-cho-hee-tah-jee)

U-tu-sa-me-he ma-ko-sa ye-tu
(Oo-too-sah-meh-heh mah-koh-sah yeh-too)

Ka-ma na-si tu-na-vyo-wa-sa-me-he wa-li-o-tu-ko-se-a
(Kah-mah nah-see too-nah-vyoh-wah-sah-meh-heh wah-lee-oh-too-koh-seh-ah)

U-si-tu-ti-e ka-ti-ka ma-ja-ri-bu
(Oo-see-too-tee-eh kah-tee-kah mah-jah-ree-hoo)

la-ki-ni u-tu-o-ko-e na yu-le mu-o-vu e-mi-le-le
(lah-kee-nee oo-too-oh-koh-eh nah yoo-leh moo-oh-voo eh-mee-leh-leh)

U-fal-me wa-ko u-fi-ke u-ta-ka-lo
(Oo-fuhl-meh wah-koh oo-fee-keh oo-tah-kah-loh)

li-fa-nyi-ke du-ni-a-ni ka-ma mbi-ngu-ni
(lee-fah-nyee-keh doo-nee-ah-nee kah-mah mbee-ngoo-nee)